



Biomime Experience

National Heart Hospital,
Sofia, Bulgaria

Preliminary data

- Experience with Biomime since 04.2012 until now
- 85 patients
- 103 stents implanted until 07.01.16
- 31/85 (**36.5%**) patients with angiographic follow up

Baseline demographics characteristics

Characteristics	N = 85 Patients
Age (mean \pm SD, yrs)	62.8 \pm 9.2
Male, n (%)	57 (67.1)
Diabetes Mellitus, n (%)	44 (51.8)
Weight (mean \pm SD, Kg)	82.7 \pm 16.4
Height (mean \pm SD, cm)	171.0 \pm 8.9
BMI (mean \pm SD, kg/m ²)	28.1 \pm 5.1
Hypertension, n (%)	78 (91.8)
Smoker, n (%)	28 (32.9)
Hypercholesterolemia, n (%)	83 (97.6)
Family History of CAD, n (%)	11 (12.9)
Previous MI, n (%)	36 (42.4)
Previous CABG, n (%)	5 (5.9)
Peripheral Artery Disease, n (%)	9 (10.6)
Cerebrovascular Disease, n (%)	16 (18.8)
Renal Failure, n (%)	14 (16.5)

Characteristics

Characteristics	N = 85 Patients
STEMI, n (%)	15 (17.6)
NSTEMI, n (%)	5 (5.9)
Stable Angina, n (%)	9 (10.6)
Unstable Angina, n (%)	58 (68.2)
Bifurcation stenting, n (%)	14 (16.5)
True bifurcations	13/14 (93)

Procedural and Lesion characteristics

Total no. of Stent (n)	N = 103 Stent
No. of stent per patient, (mean \pm SD, mm)	1.21 \pm 0.5
No. of stent per lesion, (mean \pm SD, mm)	1.16 \pm 3.7
Average stent length, (mean \pm SD, mm)	26.4 \pm 10.0
Average stent diameter, (mean \pm SD, mm)	3.2 \pm 0.4
Maximum Balloon pressure, (mean \pm SD, atm)	13.8 \pm 2.3 (8-18 atm range)

Procedural and Lesion characteristics

Characteristics	N = 89 Lesion
Target Coronary Artery	
Left Main, n (%)	2 (2.2)
Left anterior descending artery, n (%)	36 (40.4)
Left circumflex artery, n (%)	15 (16.9)
Right coronary artery, n (%)	34 (38.3)
Saphenous vein Graft, n (%)	2 (2.2)
Lesion Type C - intervened, n (%)	22 (25.6)
Medina classification, n (%)	
0,1,1	1 (1.1)
1,0,1	3 (3.4)
1,1,0	3 (3.4)
1,1,1	6 (6.7)
0,0,1	1 (1.1)

Vessels affected

Type stenosis

Distribution in arteries

Stent size distribution

Stem Length distribution

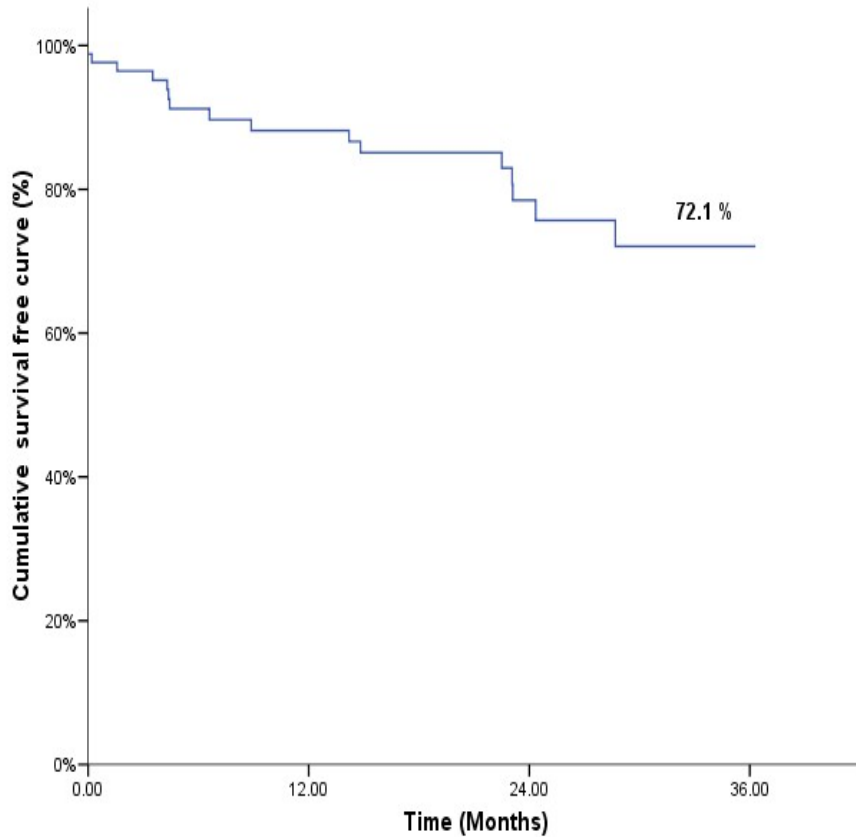


Table 3: Cumulative Clinical Outcomes at 30 days, 6 months, 12months, 24months, 36months follow - up

	30 days	6 months	12 months	24 months	36 months
No of Patient fup	85	62	58	28	2
Cardiac death	0 (0%)	0 (0.0 %)	0 (0.0%)	0 (0.0%)	0 (0.0%)
Non Cardiac death		2 (2.4%)	3 (3.6%)	4 (4.8%)	4 (4.8%)
MI				1 (1.2%)	1 (1.2%)
TLR		2 (2.4%)	2 (2.4%)	4 (4.7%)	4 (4.7%)
TVR but no TLR		2 (2.4%)	3 (3.5%)	6 (7.1%)	6 (7.1%)
Stent thrombosis		0 (0.0%)	0 (0.0%)	0 (0.0%)	0 (0.0%)
Cardiac death/MI or TLR				5 (5.9%)	
Cardiac death/MI or TVR				11(12.9%)	

Value expressed at number (%), TVR = Target Vessel Revascularization, TLR = Target Lesion Revascularization; Stent thrombosis according to the ARC (Academic Research

KAPLAN MEIER GRAPH



N	Valid	85
	Missing	0
Mean		18.8000
Median		21.4543
Std. Deviation		11.48840
Minimum		.03
Maximum		36.30
Percentiles	25	5.4046
	75	28.1731

Srno	Pt No.	TIME LIVE (days from index to 07.01.2016)	EVENT	Comments
1	34	873	TVR	
2	6	741	NON CARDIAC DEATH	died in 2014 from renal failure
3	15	703	MI	instent restenosis in other DES in the same vessel, with MI
4	14	702	TLR	
5	8	685	TLR	
6	33	451	TVR	
7	44	432	TVR	
8	51	270	NON CARDIAC DEATH	Died from pneumonia
9	53	201	TVR	
10	57	135	TVR	
11	1	133	TLR	
12	52	131	NON CARDIAC DEATH	Died from intracranial haemorrhage
13	4	107	TLR	
14	29	48	TVR	CABG at 50 day due to restenosis in other stents implanted in LM-LAD and LCx
15	71	6	CARDIAC DEATH	died from stroke at 6 th postprocedural day
16	81	1	CARDIAC DEATH	Died during procedure of STEMI

**16/85 =
18.8%**