



Case presentation:
IVUS guided stenting in LM bifurcation

Ioannis Iakovou, MD, PhD
Onassis Cardiac Surgery Center
Athens, Greece



Case presentation



- Pt History: 71 ys, female, hypertensive, with recent onset of dyspnea (NYHA II-III)
- Recent catheterization showed stenosis at the LM





Case presentation

Baseline Angiogram



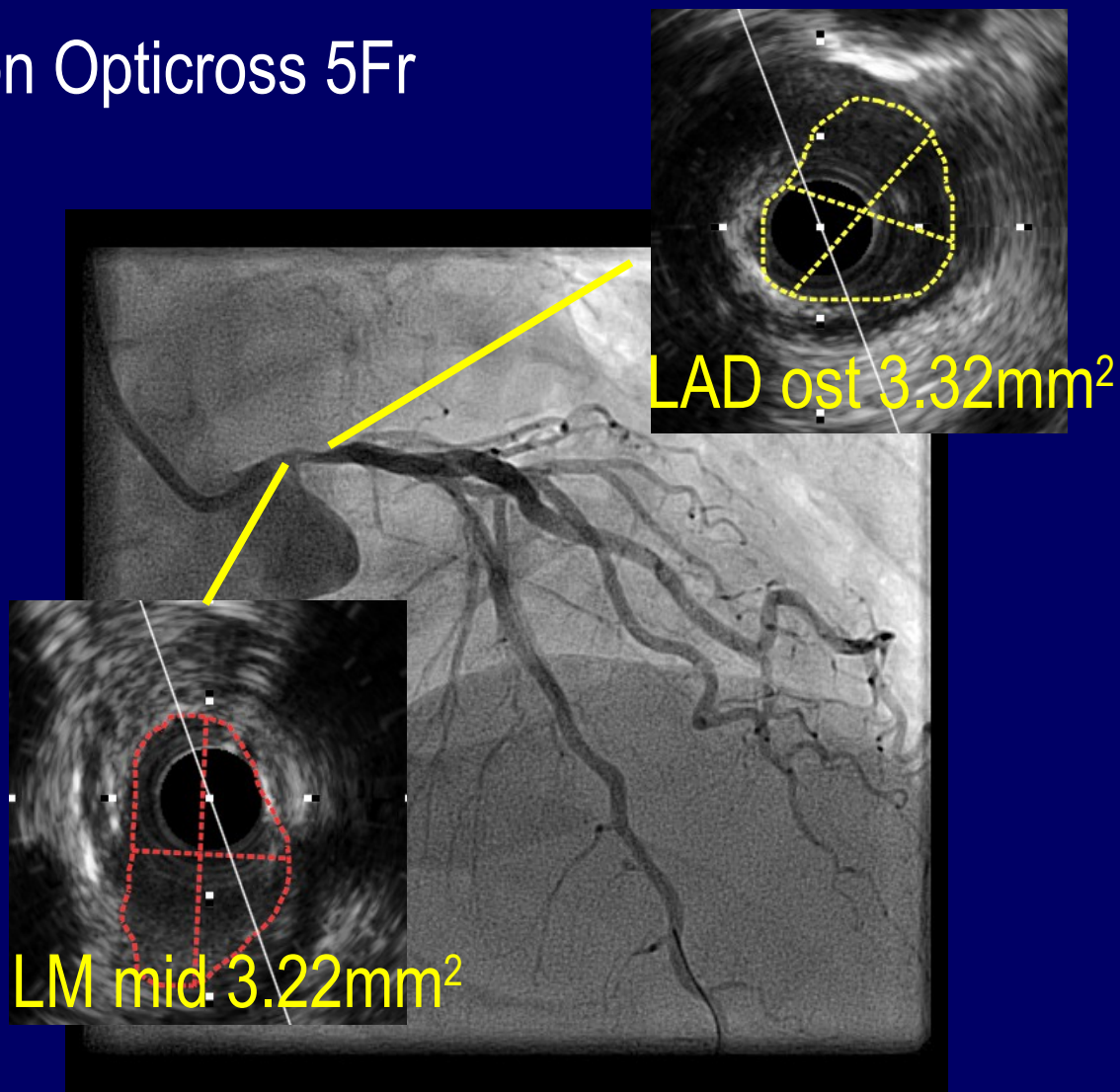


Case presentation

IVUS interrogation



Boston Opticross 5Fr



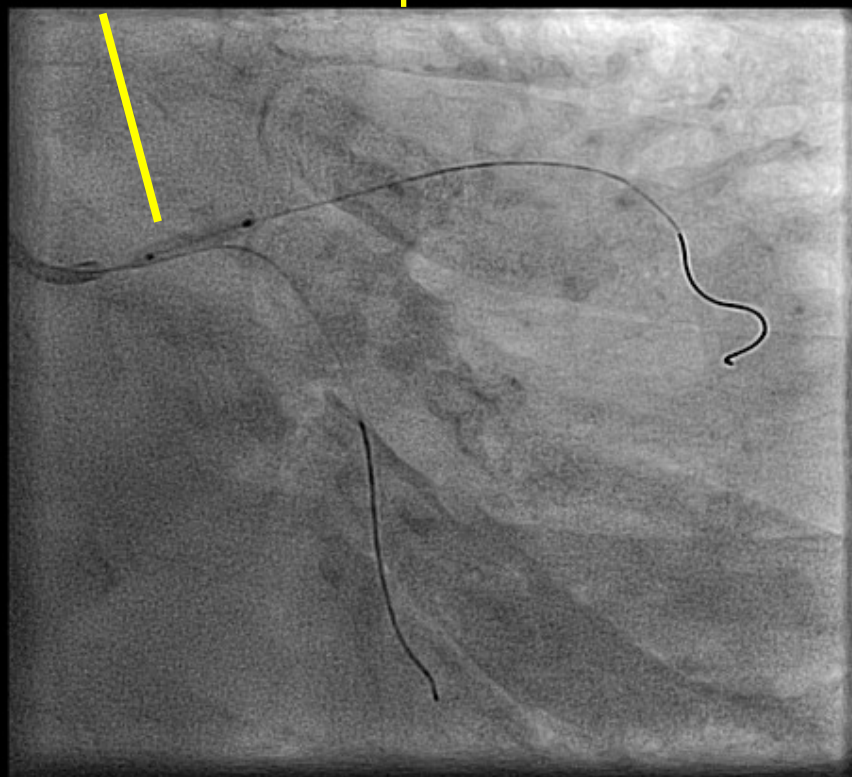


Case presentation

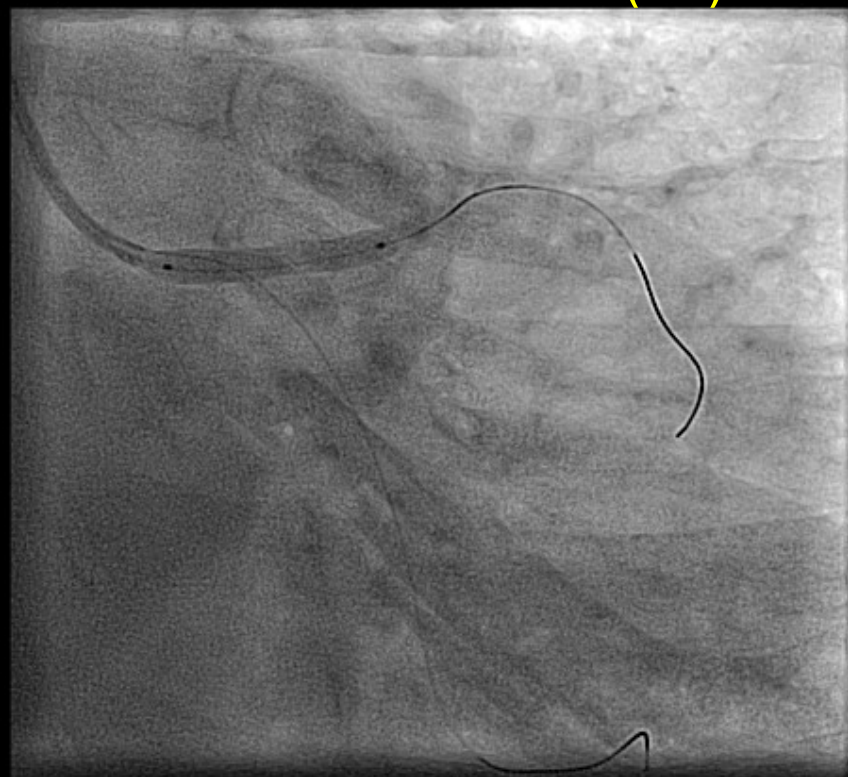


Plan → provisional stenting with FKBI and POT

Predilatation Sprinter 2.5 x 12



Resolute Int 3.5 x 22 (16)



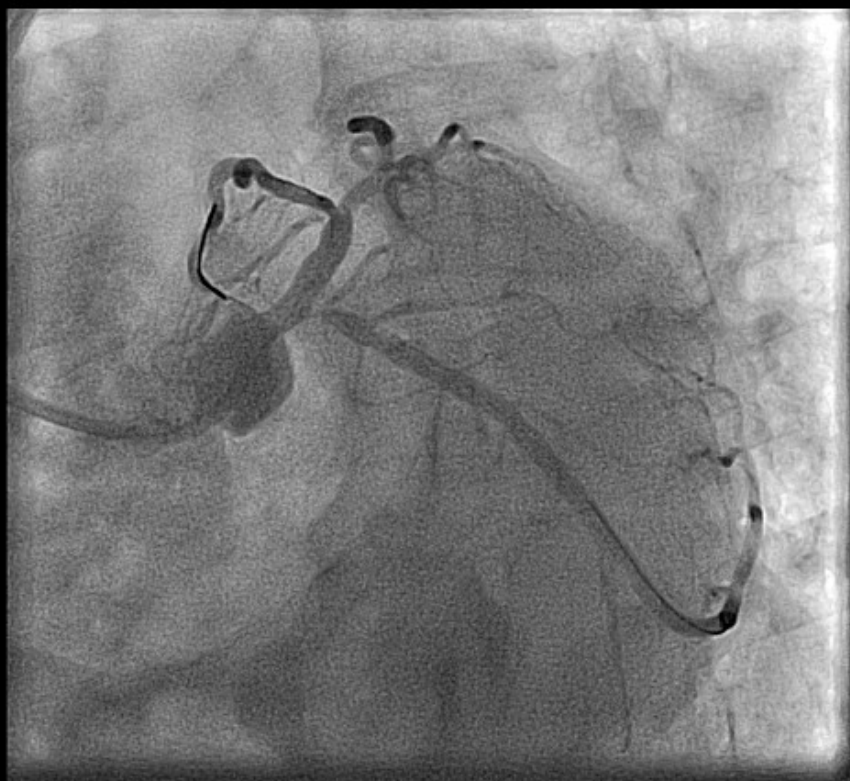


Case presentation



No POT, Rewiring of the LCX with Pilot 50

Dil @ SB NC Sprinter 2.5 x 12 (18)



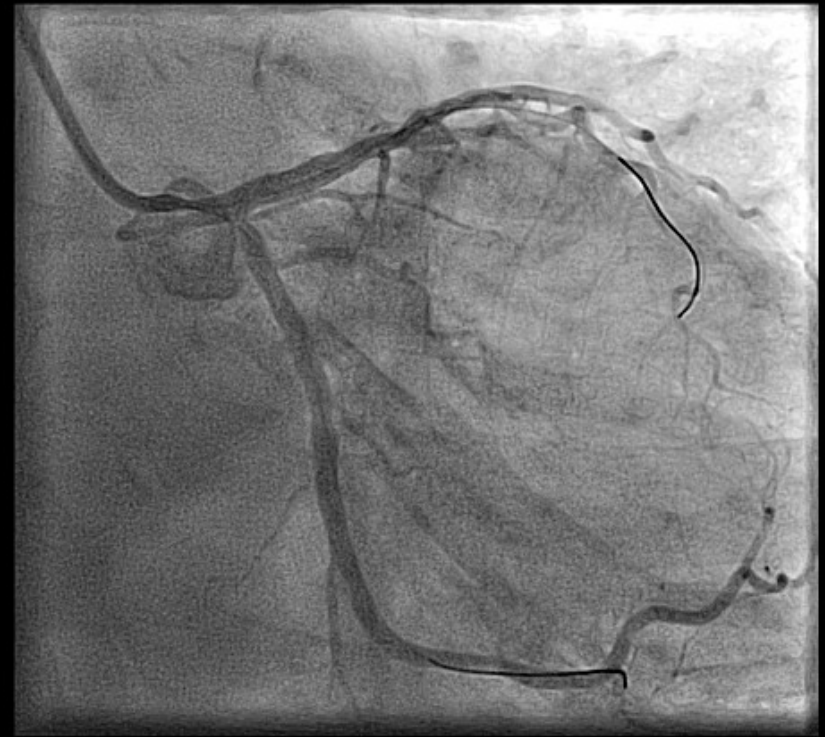
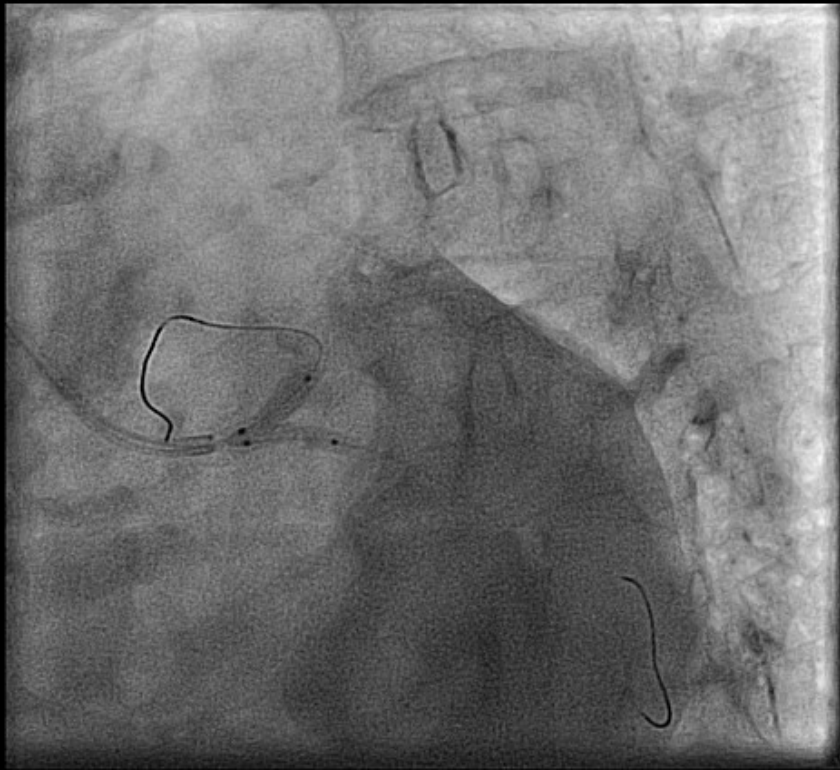


Case presentation



FKBI (NC Sprinter 2.5 x12 NC 3.5 x12)

Post FKBI

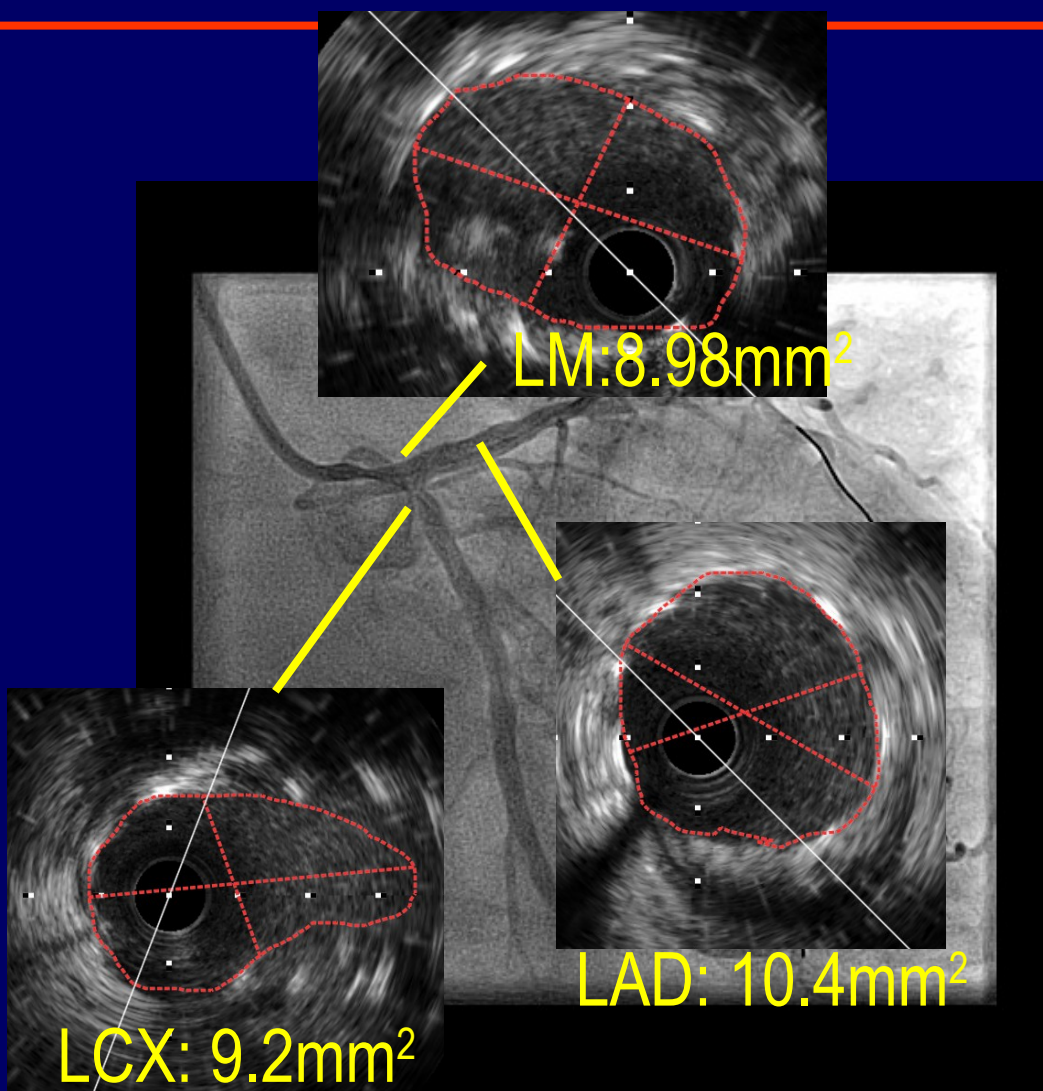




Case presentation



Post FKBI IVUS –LAD & LCX pullbacks



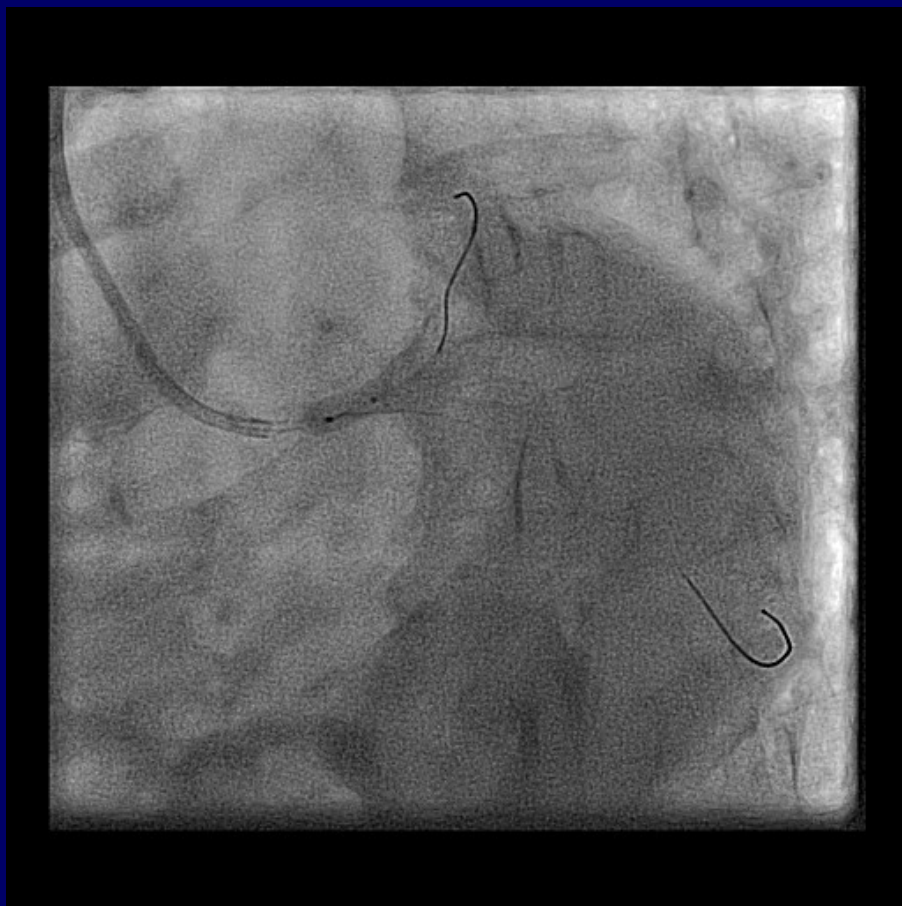
IVUS Ring-down artifact



Case presentation



POT (NC sprinter 4.0 x 6)



post POT IVUS

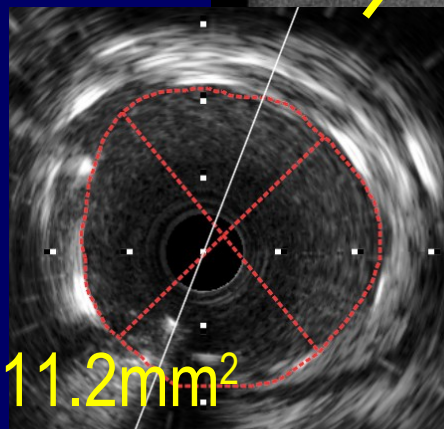
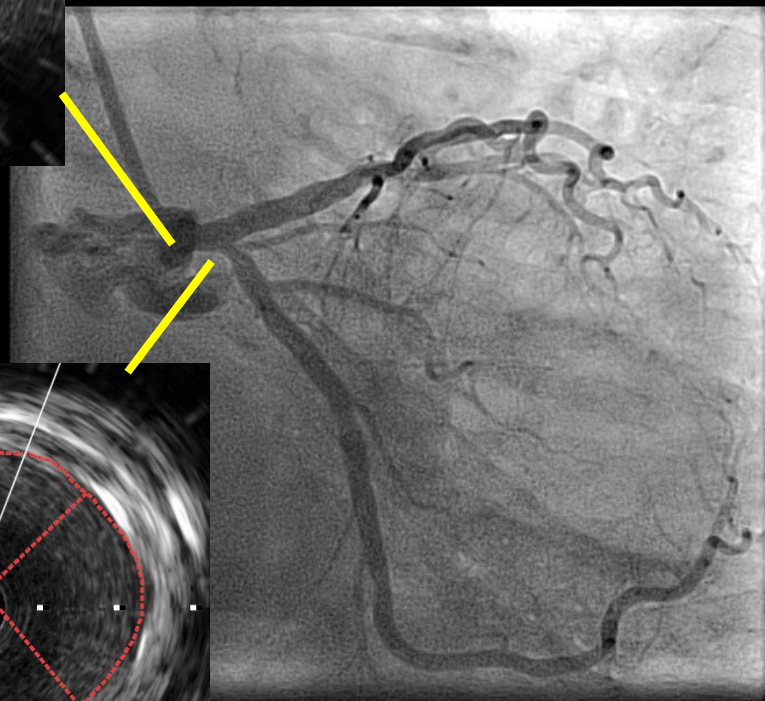
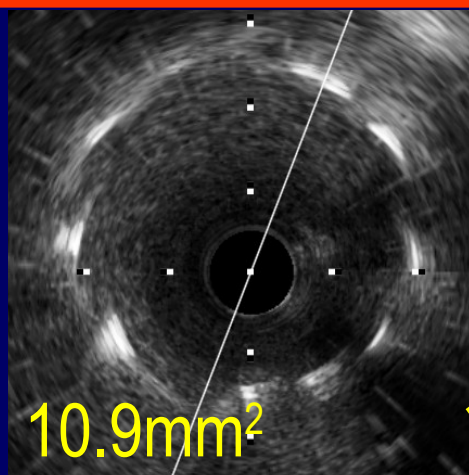




Case presentation



post POT IVUS





Case presentation final result





Take home messages



- IVUS usage provides important information in LM PCI especially regarding the correct sizing of devices and in identifying complications
- POT is an important step in bifurcation stenting



Thank You!